

Boundary Road Colliers Wood, SW19 2AX

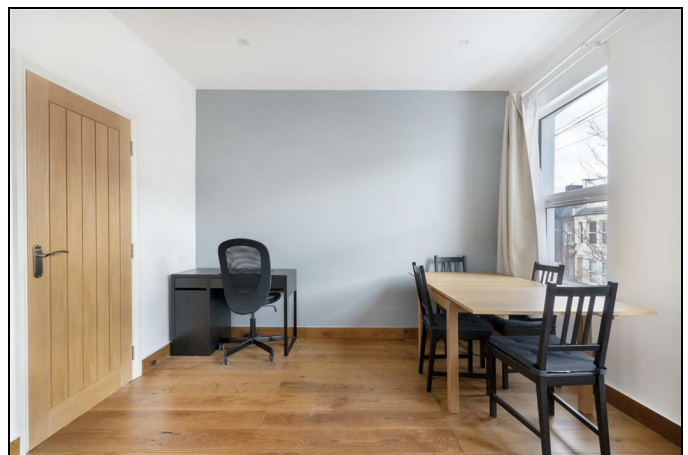
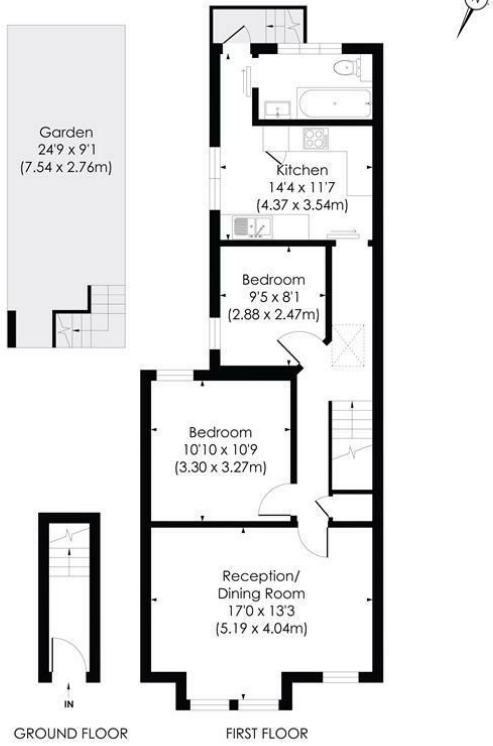
£2,250 Per Month



****AVAILABLE 26th JUNE 2026**** A spacious and beautifully presented two double bedroom maisonette, located on a highly sought after road close by to Colliers Wood Underground Station. The property comprises of two good sized double bedrooms, a great sized bright front reception room, fitted kitchen and modern bathroom, with direct access to a private south facing rear garden. This is a lovely property and is offered to the market furnished and is available now. Call now, and don't miss out on this fantastic property!

BOUNDARY ROAD, SW19

Approx. Gross Internal Floor Area
723 Sq. ft/67.14 Sq. m



© Pixangle Property Marketing Ltd. Info@pixangle.com Tel: 0208 870 2118
 This floor plan has been prepared for the purpose of illustration only in accordance with the latest RICS code of measuring practice and is not to scale. All measurements and areas are approximate and whilst every effort has been made to ensure the accuracy of the plan contained here, no responsibility is taken for any error, omission or misstatement.

- Two Double Bedrooms
- Private South Facing Garden
- Modern Kitchen and Large Bathroom
- Recently Refurbished
- Furnished
- First months rent in advance
- Damages deposit = five weeks deposit
- Fee of Intent = one weeks rent
- EPC Rating : C
- Merton Council Tax Band : C

Energy Efficiency Rating		
	Current	Potential
Very energy efficient - lower running costs		
(92 plus) A		
(81-91) B		
(69-80) C	71	79
(55-68) D		
(39-54) E		
(21-38) F		
(1-20) G		
Not energy efficient - higher running costs		
England & Wales	EU Directive 2002/91/EC	



Although these particulars are believed to be correct, their accuracy is not guaranteed and they do not form part of any contract.

Celebrating 30 years of successful Sales and Lettings in Merton

